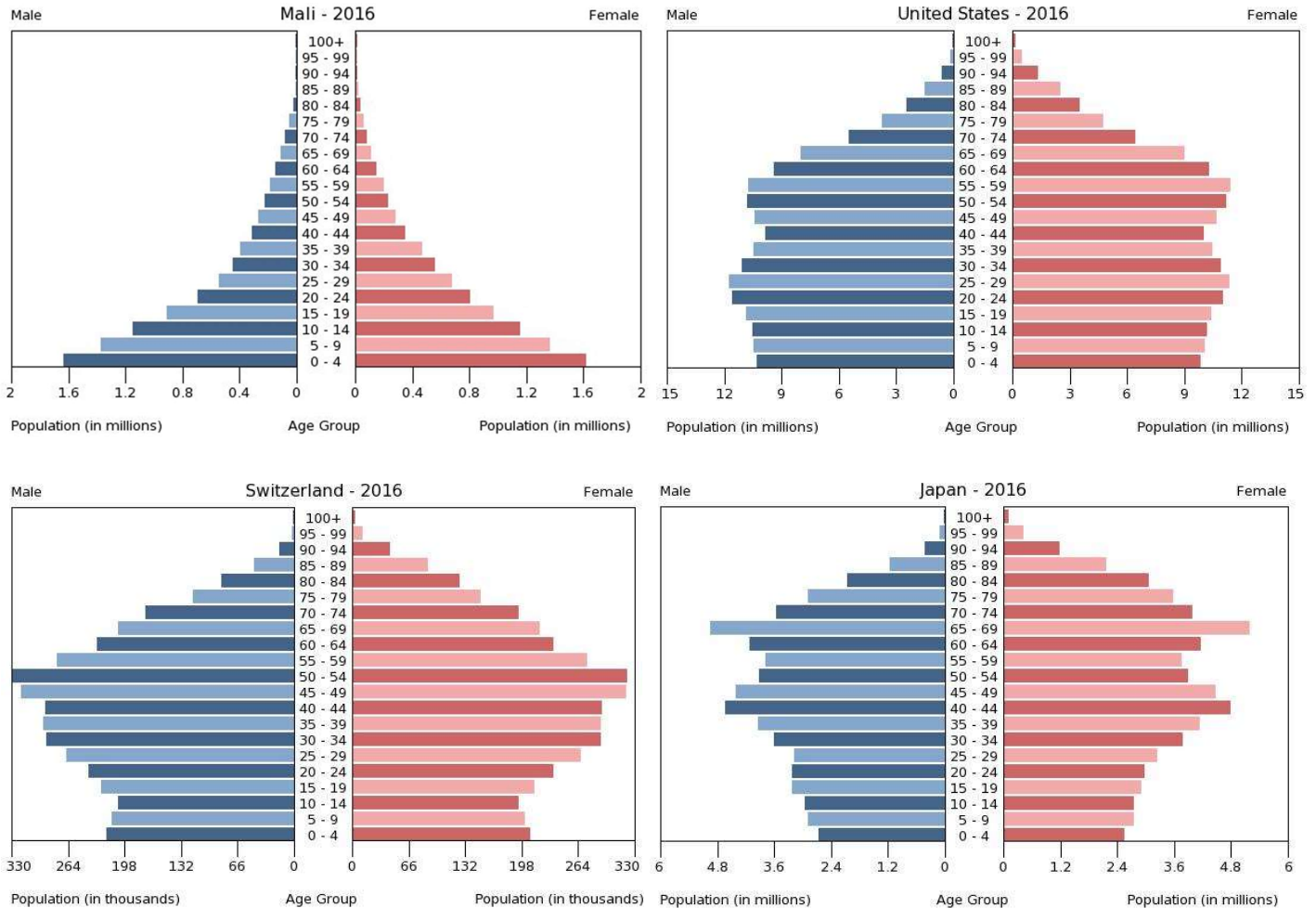


An age structure diagram (or population pyramid) is a graphical illustration showing the distribution of various age groups in a population. Although ecologists use these to monitor the growth of plant and animal populations, they are also useful for monitoring human populations.

When reading an age structure diagram, the males can be found on the left and females on the right. The x-axis shows the absolute number for population, while the y-axis shows age groups. The four diagrams at the bottom of this page show the population demographics for Mali, Switzerland, the United States, and Japan. **Note** the scale on the bottom of the diagram is not the same for each of the populations.



- Which diagrams best represents the following characteristics of **natality (births)** and **mortality (deaths)**?
 - Natality < Mortality
 - Natality > Mortality
 - Natality = Mortality

